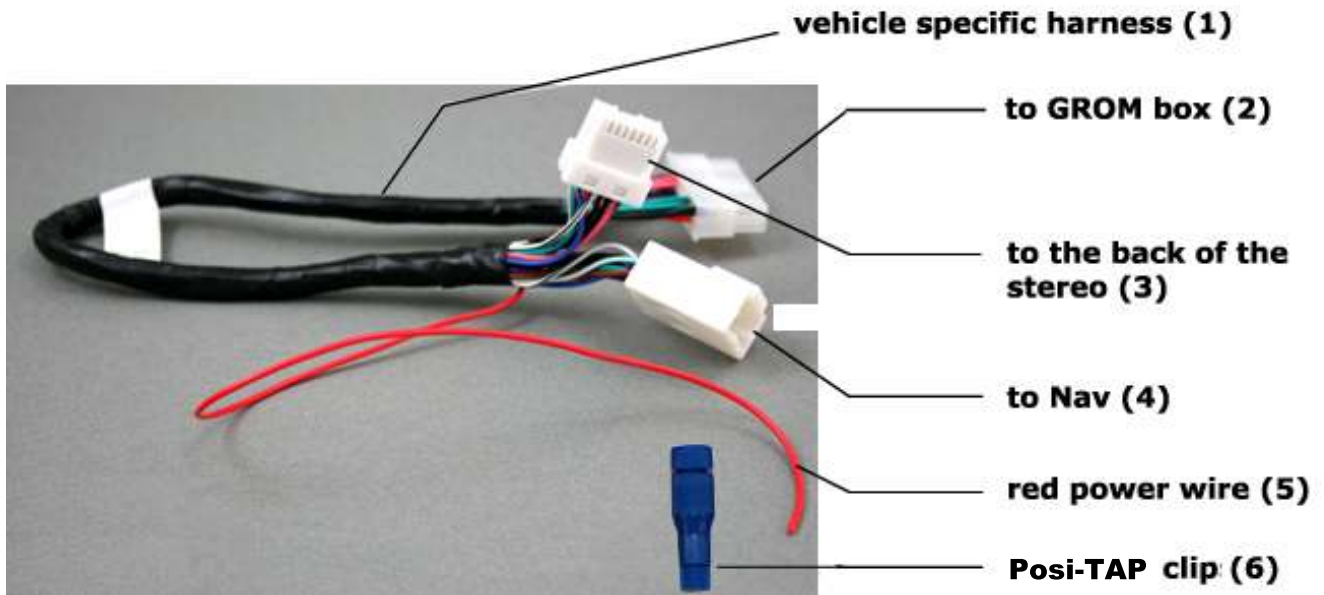


## **GROM Interface Installation into Nissan and Infiniti cars using NIS2 vehicle specific harness**



**Picture 1: NIS02 vehicle specific harness (5) – red power wire can also be yellow**

### ***Tools needed***

1. Panel trim removal tool (optional)
2. Philips screwdriver

**Check <http://gromaudio.com/installs/index.html> for video guide of the car stereo removal and GROM adapter installation into Nissan and Infiniti.**

### ***Important compatibility notes***

**NIS02 adapter with SAT emulation** GROM adapter for the Nissan and Infiniti (NIS02) uses SAT mode of your stereo. You will lose the use of the external SAT to gain the use of your USB, iPod or MP3. Do not connect the satellite harness back to the GROM NIS2 harness port (4) if you decided to use the GROM adapter as SAT and GROM will interfere with each other and may not perform correctly.

### ***Preparation***

1. Turn off the car engine and remove the key from the ignition.
- It is recommended to disconnect the car battery before performing the installation.

2. While using the stereo removal tools carefully remove the radio from the dash pocket (see the video guides at <http://gromaudio.com/installs/index.html>)

## ***Installation***

3. Locate the vehicle specific cable (NIS2) and blue colored Posi-Tap clip that came with your adapter (picture 1)

4. Connect NIS2 harness to the port at the back of the radio (see picture 2). Use the connector (3) on the picture 1.

**Note:** If the port at the back of the stereo is empty – leave the female end of the NIS2 harness (4) hang free – do not connect it to anything.

If the port is occupied with the different factory harness – disconnect this harness; insert connector (3) to the slot at the back of the stereo.

**SAT Emulation + stereo without factory NAV:** do not reconnect the factory harness back to the female end of NIS2 harness or it will interfere with SAT.

**SAT Emulation + stereo with factory NAV:** to preserve the NAV reconnect the factory harness back to GROM NIS2 female slot (4). You will also need to locate SAT tuner in the trunk of your car and disconnect it from the SAT tuner port.

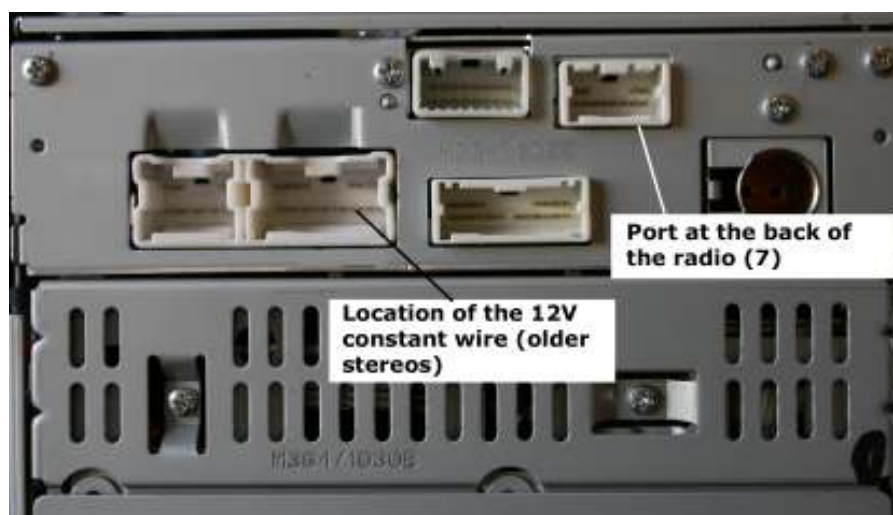
**CDC Emulation:** reconnect the disconnected factory harness back to the stereo using the female end of the NIS2 harness (4). Note: If stereo does not recognize GROM, you might need to disconnect reconnected harness from female slot (4) on NIS2 GROM harness.

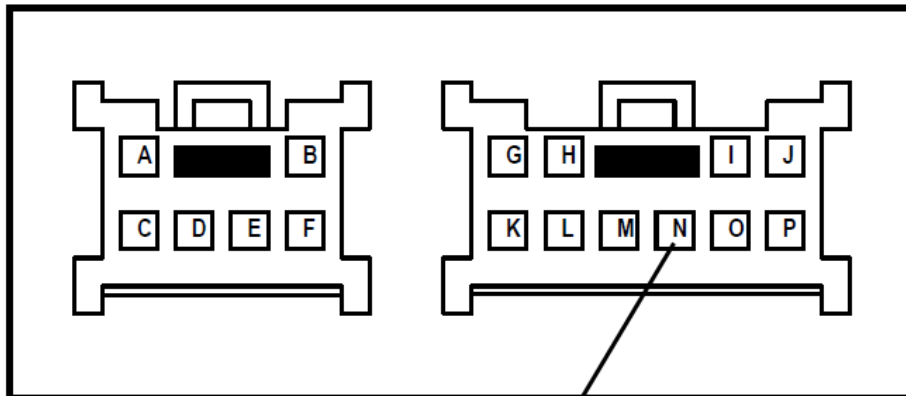


**Picture 2 Back of the Nissan Radio**

5. Connect RED power wire (5) on the NIS2 harness to the radio 12V constant wire. You will need to use the blue Posi-Tap clip (6). The Posi-Tap clip is provided with your package.

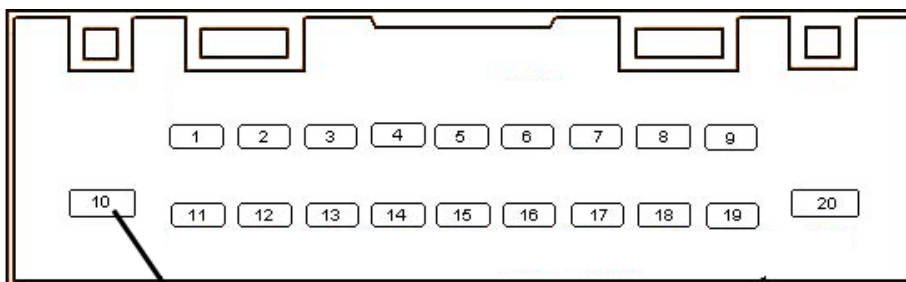
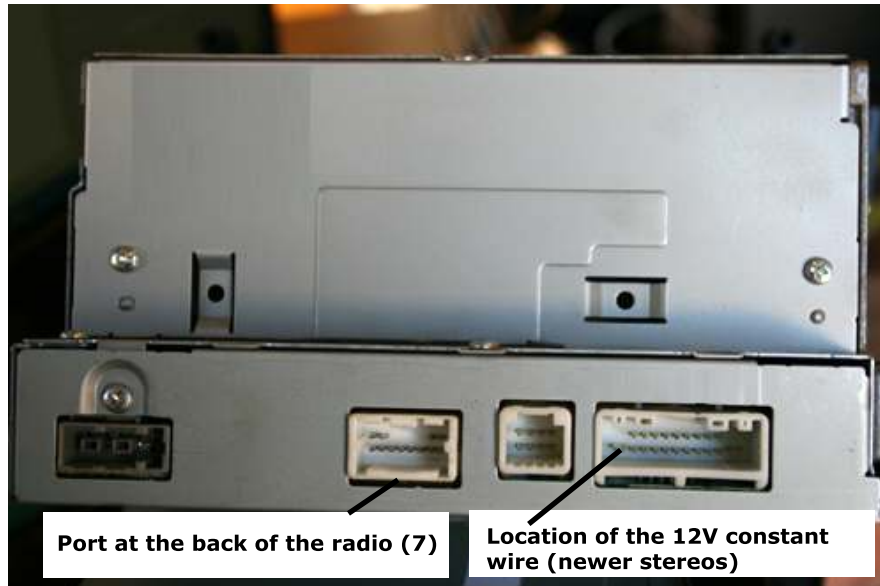
6. Locate the radio 12V constant wire on the main stereo harness. Refer to the diagram below; there could be 2 scenarios, depending on whether you have the older or the newer Nissan stereo:





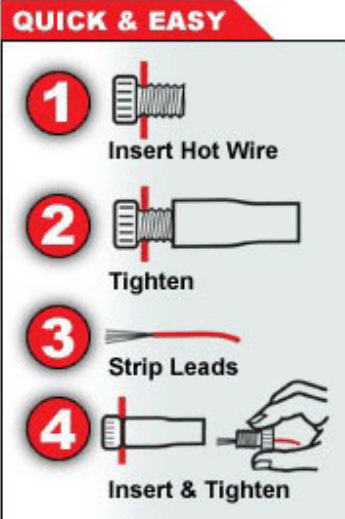
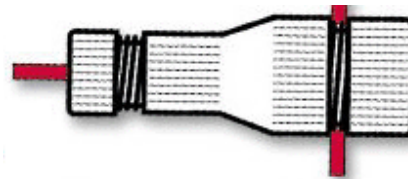
**12V constant power wire (usually yellow or pink)**

**or**



**12V constant power wire ( usually yellow or purple)**

7. Connect the 12V constant wire and red power wire (5) on NIS02 harness using the Posi-Tap. Please refer to the scheme below for the proper connection (scheme 1).



**Scheme 1. How to connect the wires using Posi-taps.**

The wire (the 12V constant wire) that comes from your stereo is the “HOT” wire referring to the scheme 1. Attention: Don't forget to strip the red power wire on your vehicle specific harness NIS02.

**WARNING! NEVER CUT ANY WIRES THAT COME FROM YOUR STEREO!**

8. If you have any problems with using posi-taps please take a look at: <http://gromaudio.com/docs/posi-tap.pdf> or contact us for the help.

9. Route the GROM harness to the bottom compartment or glove box and connect the GROM unit to the vehicle specific harness (NIS2).

**Note: You might want to leave the GROM unit in the dashboard compartment (make sure that there is enough space) and just route the USB and the other cables out; or you can place the GROM unit in the easily accessible place and secure it with the Velcro stripes.**

10. Test the unit operation BEFORE mounting the stereo back into the dashboard.

**SAT Emulation:** Cycle the ignition and put the stereo into the SAT mode. It should show XM 001 on a display. If it is not - see Troubleshooting section.

**CDC Emulation:** Cycle the ignition and put the stereo into the CDC mode. It should show Disk 1 Track 1 or CD1 – 01 on your stereo.

11. If the correct operation of the unit is confirmed mount the stereo back to the dash. If not – please see the troubleshooting section of the GROM adapter manual and this insert.

12. Congratulations! You have installed GROM adapter and you may use it right now with your portable player.

## ***Troubleshooting***

### **The stereo cannot recognize the GROM adapter for Nissan**

1. Make sure that the RED power wire on the NIS2 harness and the 12V constant power wire on the car stereo are properly connected to each other.
2. Make sure that you put the stereo into correct mode – either SAT/XM or CDC.
3. **SAT Emulation:** Make sure that if SAT was present it was properly disconnected either at the back of the stereo or in the trunk (see page 2 of this manual).
4. **CDC Emulation:** Try to disconnect the factory harness from female slot (4) on NIS2 cable.

### **Need to contact us?**

Please use the form at <http://gromaudio.com/support.html> Your question will be answered within one business day.

You can also chat with us LIVE at [www.gromaudio.com](http://www.gromaudio.com) 7am-5pm PST Monday through Friday.

### ***Disclaimer***

- This product is not affiliated with any of the OEM manufactures
- Modifying the radio may void any outstanding warranty it may have.
- There are no warranties expressed or implied by purchase of this product
- While every care has been taken to provide a quality product, we cannot guarantee the GROM adapter to function correctly if installation is not done according to the instructions in this guide.
- Keep your eyes on a road while driving!
- We're not liable for misuse of this product. Misuse includes improper installation, damage to the board or radio while trying to install, and illegal use of the radio

We recommend seeking the help of the professional car stereo installer if you are not sure in your abilities to perform the installation.